

VALENCIA



Conceptualizing & Communicating Ideas to Improve Web Sites & Portals

Jeff Danser & Melanie Hardy
Valencia Community College, Orlando, FL, USA



Goals of this Session

- Portal and Web Application Integration Types
- Streamlining business processes with web applications
- Custom vs. Third party Web applications
- Enterprise Web Content Management



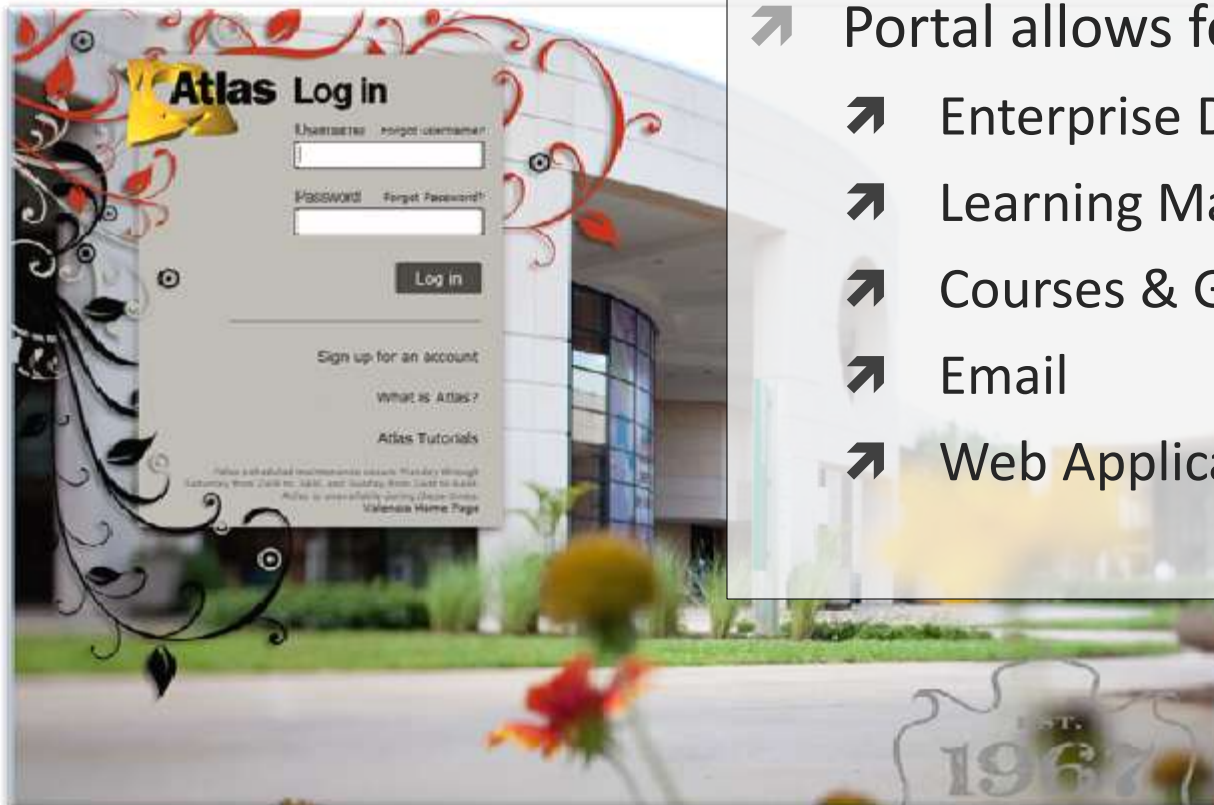
Introduction

- About Valencia Community College
- Office of Information Technology Web & Portal Services
- Web & Portal Content Contributors
- Web Application Evolution

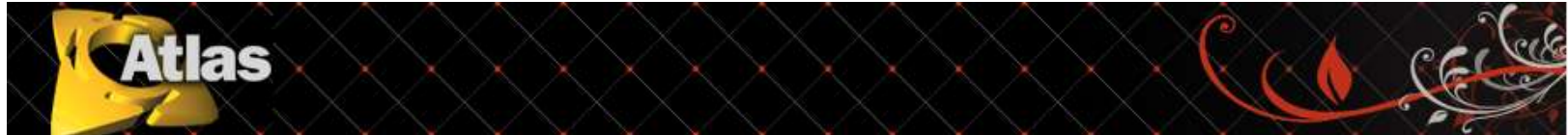


Portal Integration Types & Examples

- Valencia's Portal: "Atlas"
- Portal allows for access to:
 - Enterprise Data
 - Learning Management Systems
 - Courses & Groups
 - Email
 - Web Applications



Portal Integration Types & Examples



Faculty Schedule [+ [↑ [×]

Today is: Apr 23, 2008

Search (MM/DD/YYYY):

◀ ▶ Apr 23, 2008

Student Grades [↗ [+ [↑ [×]

Spring 2006 Credit Courses

CRN	Subject	Course	Course Title	Midterm	Final
27681	NUR	1032C	Nursing II		C

Midterm Final

Financial Aid Requirements [+ [↑ [×]

2007-2008 Academic Year

Requirements	Fund Status	Message
Loan Exit interview	✓	

Choose Another Year [v]

Hold Financial Aid Status Progress

My Account [+ [↑ [×]

Account Balance **\$0.00**

- Fall 2003 Credit Courses \$0.00
- Spring 2004 Credit Courses \$0.00
- Summer 2004 Credit Courses \$0.00
- Fall 2004 Credit Courses \$0.00
- Spring 2005 Credit Courses \$0.00
- Summer 2005 Credit Courses \$0.00
- Fall 2005 Credit Courses \$0.00
- Spring 2006 Credit Courses \$0.00
- Summer 2006 Credit Courses \$0.00
- Fall 2006 Credit Courses \$0.00
- Spring 2007 Credit Courses \$0.00
- Spring 2008 Credit Courses \$0.00

Faculty Dashboard [↗ [+ [↑ [×]

- 3-D CADD ETD 2355 Spring 2008 Credit Courses
- 3-D CADD ETD 2355 Fall 2008 Credit Courses

Faculty Grade Assignment [+ [↑ [×]

Engineering Computer Graphics	EGN 111C	Spring 2005 Credit Courses	✓
3-D CADD	ETD 2355	Spring 2005 Credit Courses	✓
Advanced CADD	ETD 1350	Fall 2006 Credit Courses	✓
3-D CADD	ETD 2355	Fall 2006 Credit Courses	✓

More [v]

Student Work Study Balance [+ [↑ [×]

2006-2007 Academic Year

Federal Work Study

Dist Busi Offc Technical(Clerk, Federal Work-Study)

Total Authorized Available:	\$128.00
Total Work Study Earned:	\$128.00
Remaining Work Study Balance:	\$0.00
Remaining Percentage of Work:	.00
Total Hours Remaining to Work:	.0

as of Jul 28, 2006

Choose Another Year [v]

Award Package Directory

Portal Integration Types & Examples

➤ Valencia's Online Courses

➤ Blackboard

➤ WebCT

➤ Integrations


➤ Course Enrollment

➤ User Management



The screenshot displays the Valencia Online portal interface. At the top, there are navigation tabs for "VALENCIA" and "ONLINE". In the top right corner, there is an "Atlas LOGIN" button. Below the navigation, a message states: "Valencia Community College is currently using two systems to deliver online, hybrid, and web enhanced courses. Click on the corresponding icon for access. If you are unsure which system your course is using, please visit the My Courses tab in Atlas." Below this message, there are two icons: a WebCT logo and a Blackboard logo. The Blackboard logo is a yellow square with the letters "Bb" in black, and the text "Blackboard" is written below it. The WebCT logo is a blue and black icon with the text "WebCT" below it.

Portal Integration Types & Examples



My GroupsGroups IndexCreate Group

[ⓧ Exit](#) [? Help](#)

Group Homepage - Nursing Spring 2010

Your Location: Group Homepage

- Group Tools
- Homepage
- Announcements
- News
- Photos
- Links
- Files
- Message Board
- E-mail
- Chat
- Members

- Personal Tools
- Acting as Group Member
- Act as Group Leader
- Join Group

Announcements

No Announcements.

▶ [More announcements...](#)

Message Board Topics

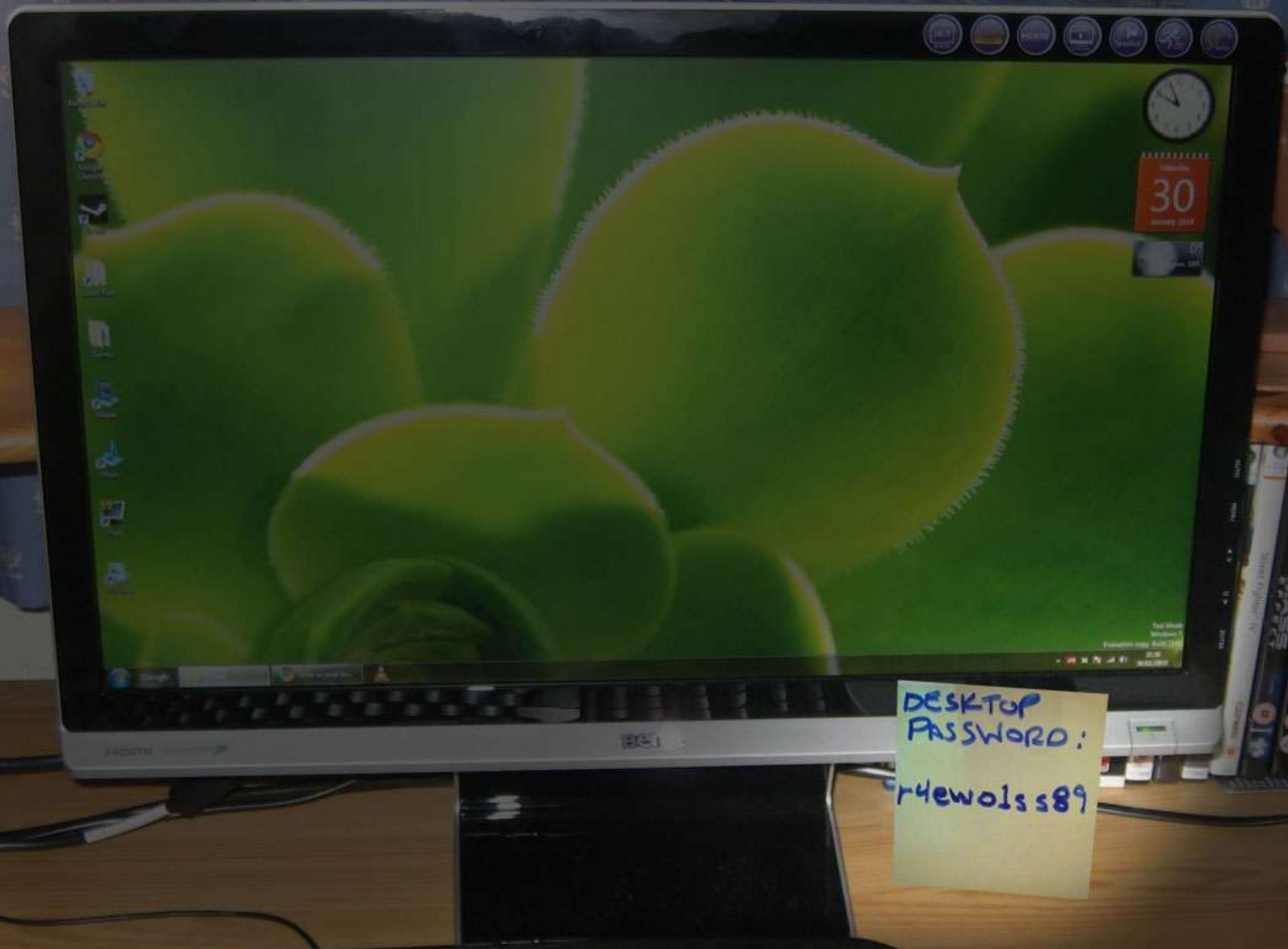
- [tomorrow](#)
- [Room mate](#)
- [Monday Morning](#)
- [Syllabus](#)

▶ [More Topics...](#) ▶ [Post a topic](#)

Portal Integration Types & Examples



- Microsoft Outlook Live – 10 GB inbox
- Windows Live Sky Drive – 25 GB password protected online storage
- Microsoft Office Live Workspace – save over 1000 MS Office Docs
- Windows Live Photo Gallery – up to 1000 photos



DESKTOP
PASSWORD :
cy4ew01s89

Portal Integration Types & Examples

- Integration Types
 - Full Integration
 - Single Sign On (SSO)
 - Hallway Page
 - Simple Link



Portal Integration Types & Examples

➤ Examples

➤ Single Sign On

➤ Gartner Research

➤ Career Search

➤ Ask a Librarian

➤ Custom Web Application

➤ New Student Orientation (NSO)

Gartner.


Career**Search**



Portal Integration Types & Examples

➔ New Student Orientation (NSO)





[Back to My Atlas Tab](#)

Email Groups Logout Help

Navigate

[My Account](#)

[General Information](#)

Instructions

[Freshman Student](#)

[Transfer Student](#)

[Orientation Schedule](#)

[Web CT](#)

[Blackboard](#)

[Log Out](#)

New Student Orientation

CHARLI ATLAS' ORIENTATION TOOLBOX

CONFIRMATION NUMBER **85431L9** REGISTERED

[Orientation Details](#)
[Change Date](#)
[Drop Orientation](#)
[Edit My Account](#)
[View History](#)

NSO TRANSACTION HISTORY

Date	Time	Detail
10/26/2010	07:20:36 AM	NSO CONFIRMATION 85431L9 : CHANGED.
10/26/2010	07:19:23 AM	NSO CONFIRMATION 85431L9 : CHANGED.
10/13/2010	01:00:38 PM	NSO CONFIRMATION 85431L9 : CHANGED.
09/13/2010	02:13:47 PM	NSO CONFIRMATION 85431S2616 : CHANGED.
08/11/2010	11:25:43 AM	NSO CONFIRMATION 85431S2560 : CHANGED.
08/09/2010	05:02:17 PM	NSO Orientation dropped
08/05/2010	05:18:58 PM	NSO CONFIRMATION 85431S2567 : CHANGED.



Streamlining Business Processes

- Business Process Assessment
- Choosing the right Web application
- Research Market for Tools
 - Gartner Research
 - Other Colleges
 - Comparison Charts
 - Demos
- Recommendation to Purchase



Custom vs. Third Party Web Applications

- Custom Web Applications
- Benefits of Third Party Web Applications
- Comparing Web Applications



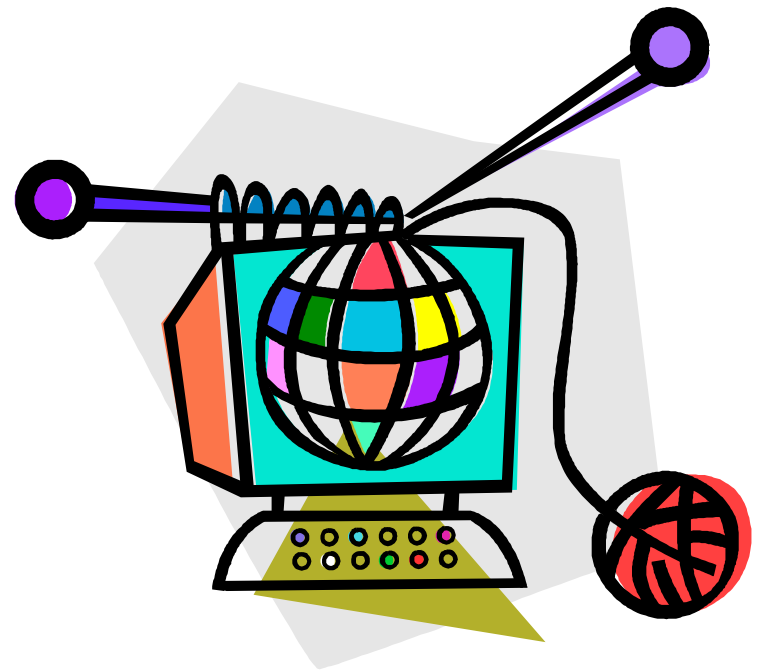
Custom vs. Third Party Web Applications

- Results
 - Cost
 - Needs Analysis
 - Re-evaluation of business processes
 - Thinking outside the box



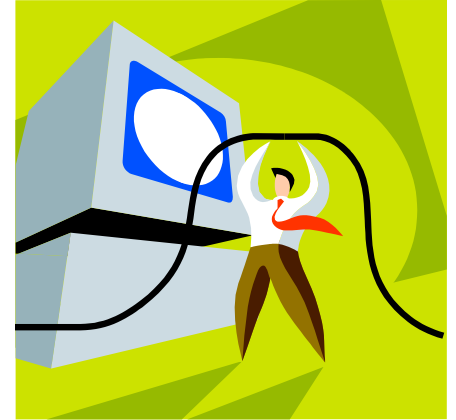
Enterprise Web Management

- Content Management System
 - Department/Group Content
 - Built in Web Applications
 - Reporting



In Closing

- Integration types
- Streamline business processes
- Third Party Web Applications
- Keep Web Site content fresh, accurate & reusable



In Closing

- Research, program & design for the benefit of students, faculty & staff
- Students have more time to focus on their education
- Faculty have more time to work with their students
- Staff can support Faculty & Students more efficiently with the right tools



CONTACT INFORMATION



OIT Web & Portal Services

Jeff Danser & Melanie Hardy

<http://valenciacc.edu/oit/web>

<http://oitvalencia.wordpress.com>

Special thanks to the EFODL & The School for the Future!

VALENCIA

